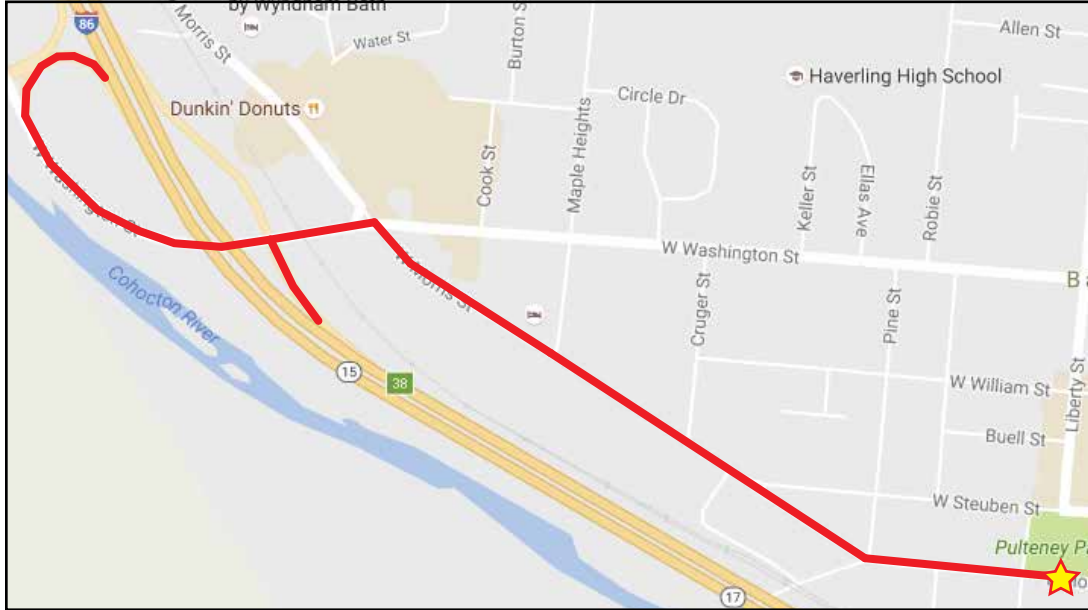


# SPECTATOR VIEWING AREAS

Runner safety is our priority on race day. Please **DO NOT** drive on the race course and use I-86 for traveling between viewing areas along the course.



## **BATH** **Pulteney Park**

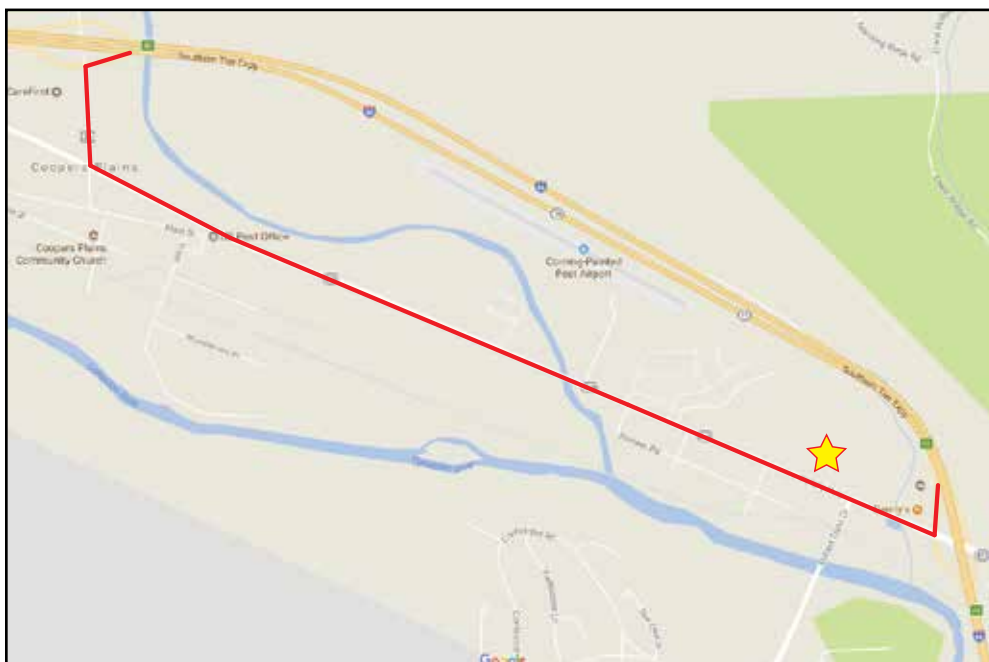
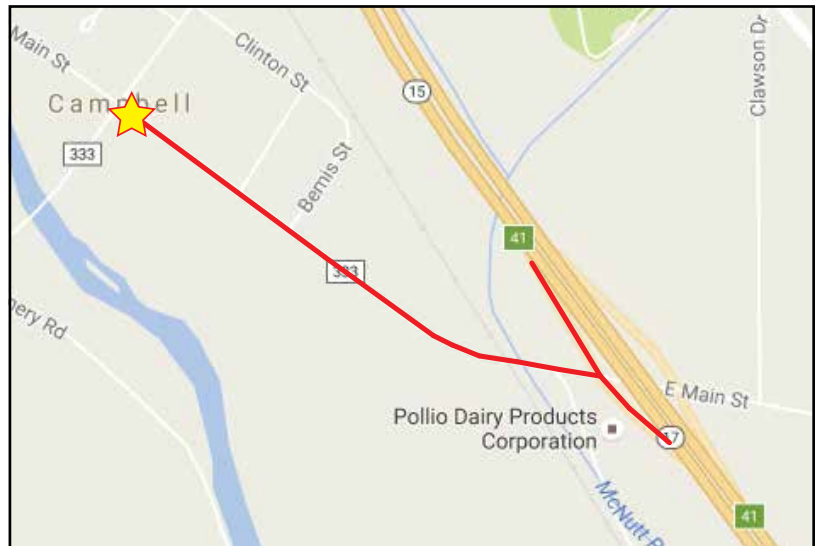
Take I-86 to exit 38. Turn right on to Washington St. Turn right on to Morris St. Continue on Morris St. and Pulteney Park will be on your left.

To leave Bath: Take Morris St. to Washington St. and make a left. Take Washington St. to the I-86 eastbound ramp and enter the highway.

## **CAMPBELL** **Four Corners**

Take I-86 to exit 41. Turn right on to Main St. Continue on Main St. until you reach the intersection of Routes 333 & 125.

To leave Campbell: Take Main St. back to I-86. Turn right on to the I-86 eastbound ramp and enter the highway.



## **PAINTED POST** **Victory Highway Church**

Take I-86 to exit 43. Turn right on to Route 415. The Victory Highway Church will be on your right.

To leave Painted Post: Turn right out of the church parking lot and continue on Route 415 to Meads Creek Road. Turn right onto Meads Creek Road and turn right on to the I-86 eastbound ramp and enter the highway.

DO NOT attempt to get back on I-86 the way you came in as Route 415 is one way.

## **CORNING** **Market Street Finish Line**

Take I-86 to exit 46 to enter Corning. Please refer to the map in the Program for parking around downtown Corning.